

BEACH PEARL 3

HOTEL

**FURNISHED APARTMENTS
WITH PRIVATE BEACH**

GOLDEN VISA

250.000 €



Rental guarantee

6 YEARS - 5%

A comfortable beach residence for your family!







Diakopto is a town located 100 min. drive from Athens City center. It lies on the coast of the Gulf of Corinth and is known for its beautiful natural surroundings, making it a popular spot for visitors looking to experience a mix of coastal beauty and mountainous landscapes.

Diakopto has a rich history, with roots dating back to ancient Greece. The town is believed to have been inhabited since antiquity, and there are various archaeological sites in the area.





About 120 years ago, the **Diakopto**-Kalavrita cogwheel railway, starting from the coastal town of Diakopto and parallel to the river's tracks, built bridges, drilled tunnels, added "teeth" and managed to climb all the way to Kalavrita.

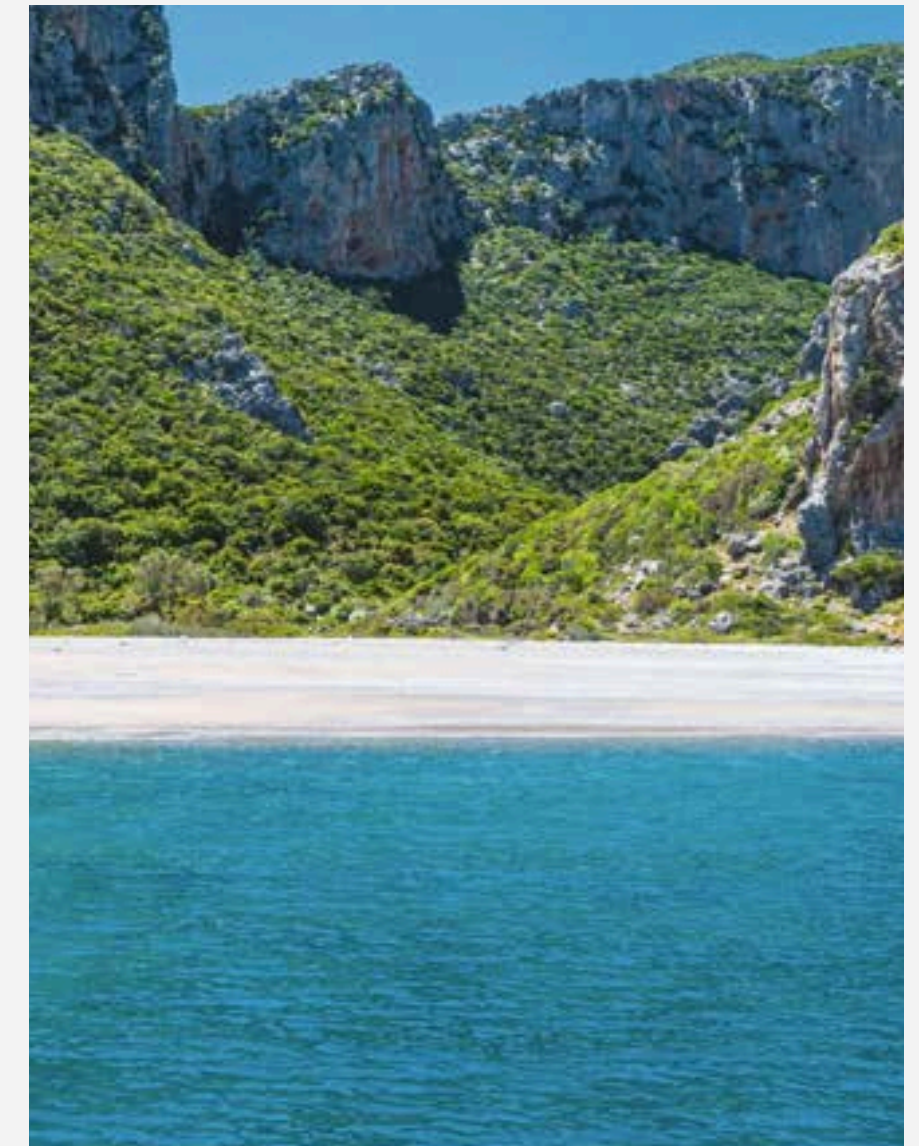
Odontotos is not just a "cogwheel train". The Vouraikos Gorge and the **Diakopto**-Kalavrita cogwheel railway are a unique attraction in Greece AND LOTS OF TOURISTS AROUND THE WORLD VISIT IT EVERY YEAR.



**Beautiful beaches along the Gulf of Corinth,
which are great for swimming, sunbathing,
and relaxation.**

GREAT BEACHES

The apartments have Private Beach !



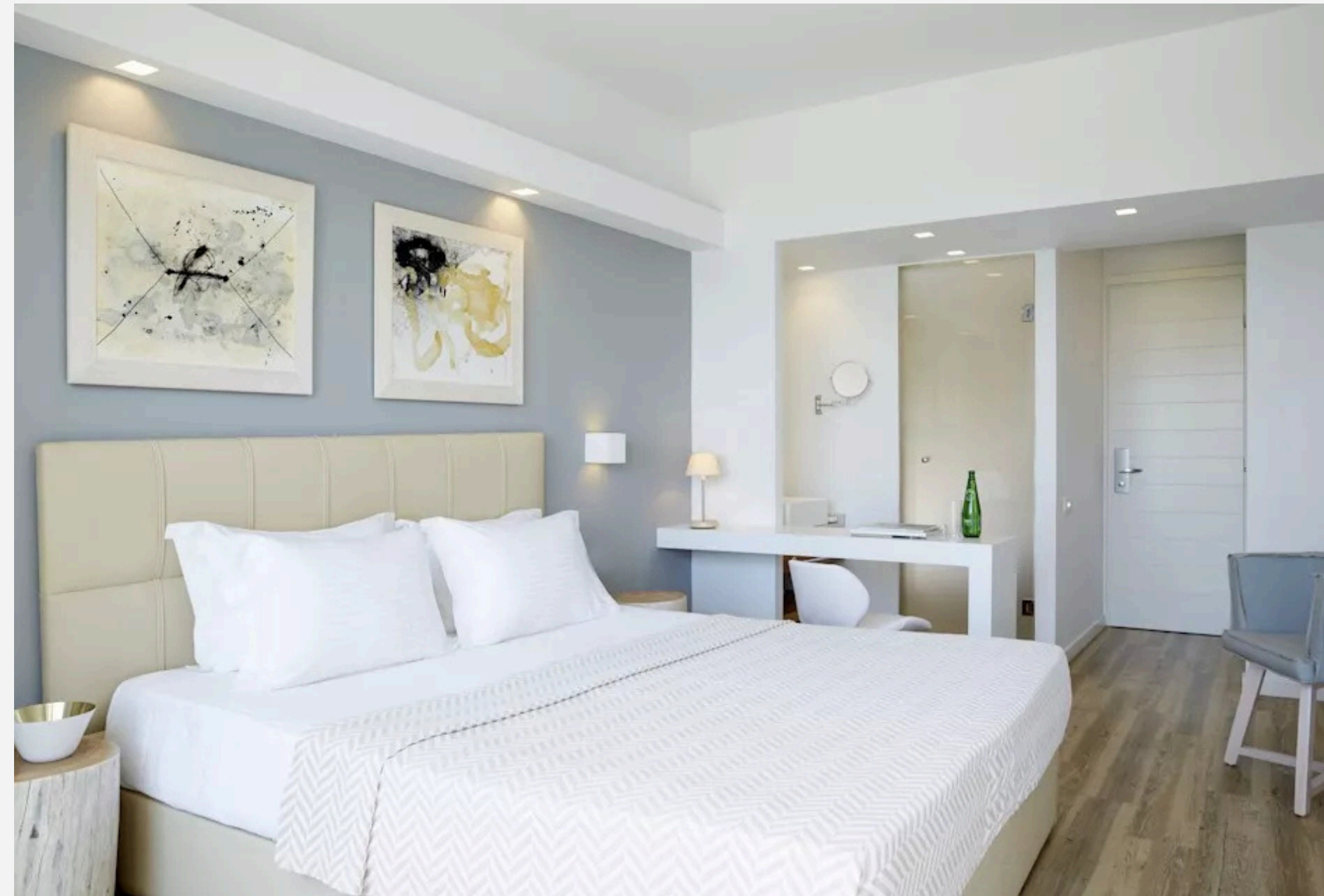




GROUND FLOOR
30 sqm.
(sleeps 2 adults + 2 children)
fully furnished Apartments
with Private Garden
& Common Pool



FIRST & SECOND FLOOR
23-25 sqm.
(sleeps 2 adults+ 1 child)
fully furnished Apartments with
Roof Garden & Common Pool





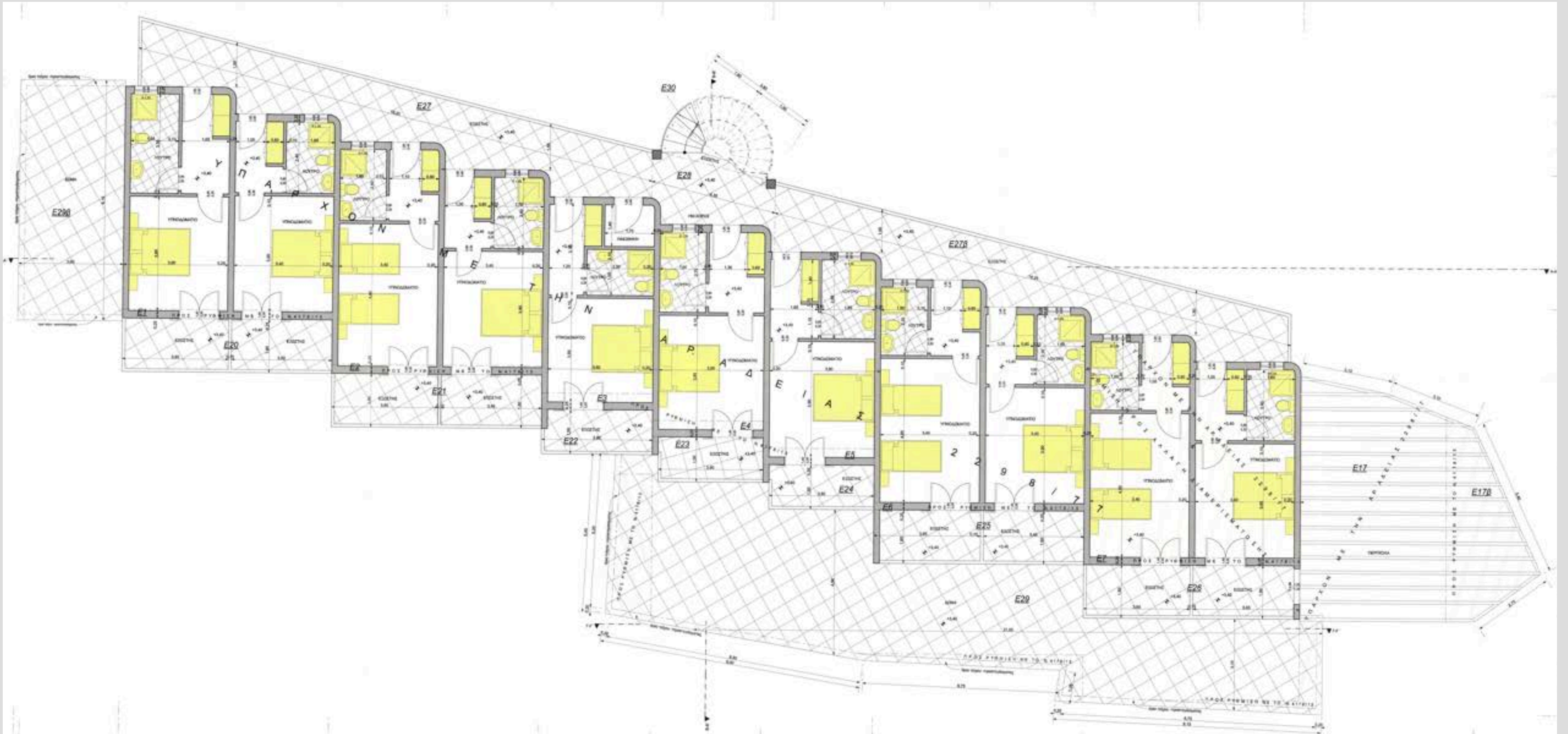
FIRST & SECOND FLOOR 26-30 sqm.
(sleeps 2 adults + 2 children)
fully furnished Apartments
with Roof garden & Common Pool





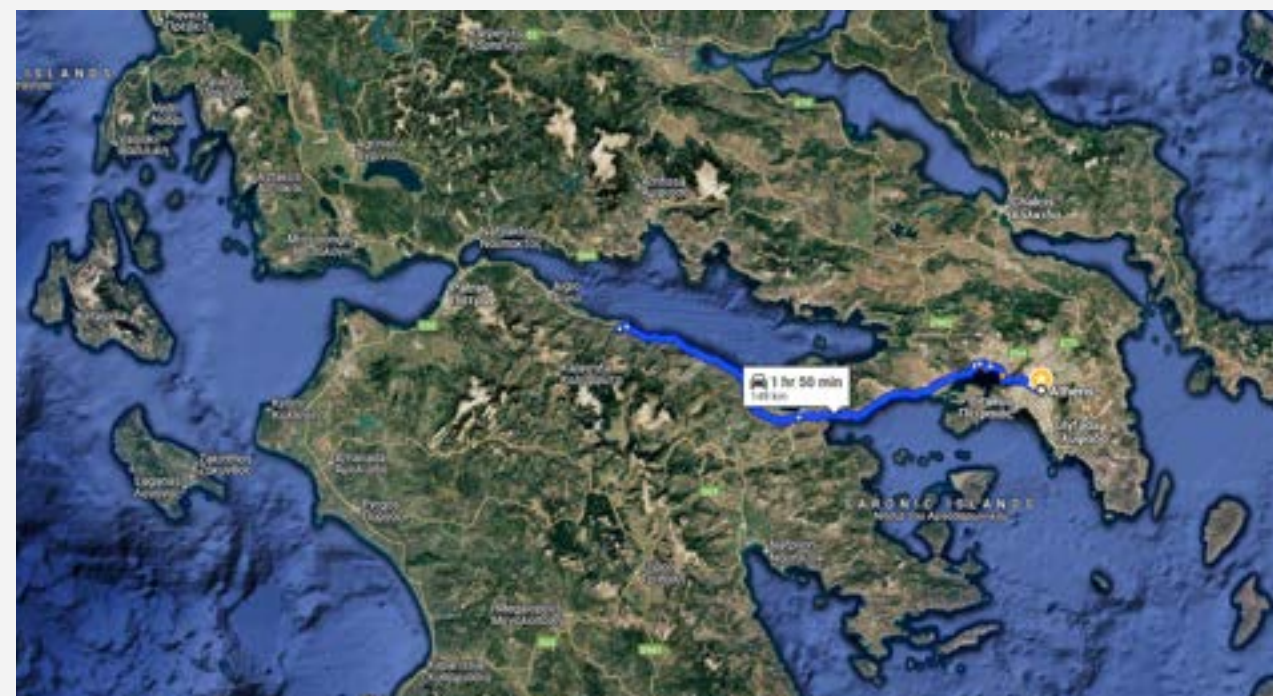


A FLOOR PLAN



B FLOOR PLAN





1 min. walk
to the Beach

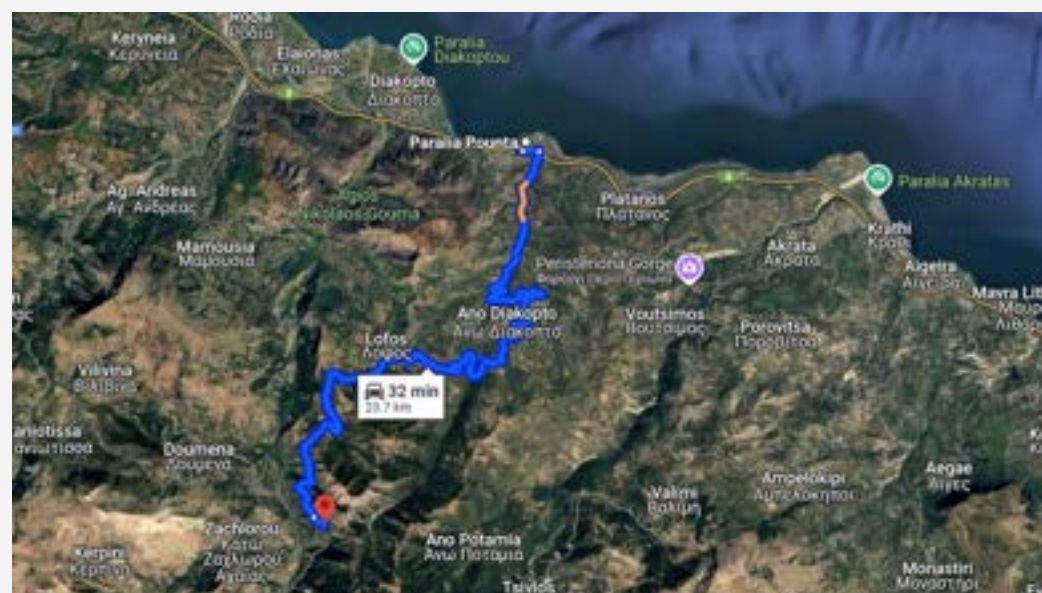
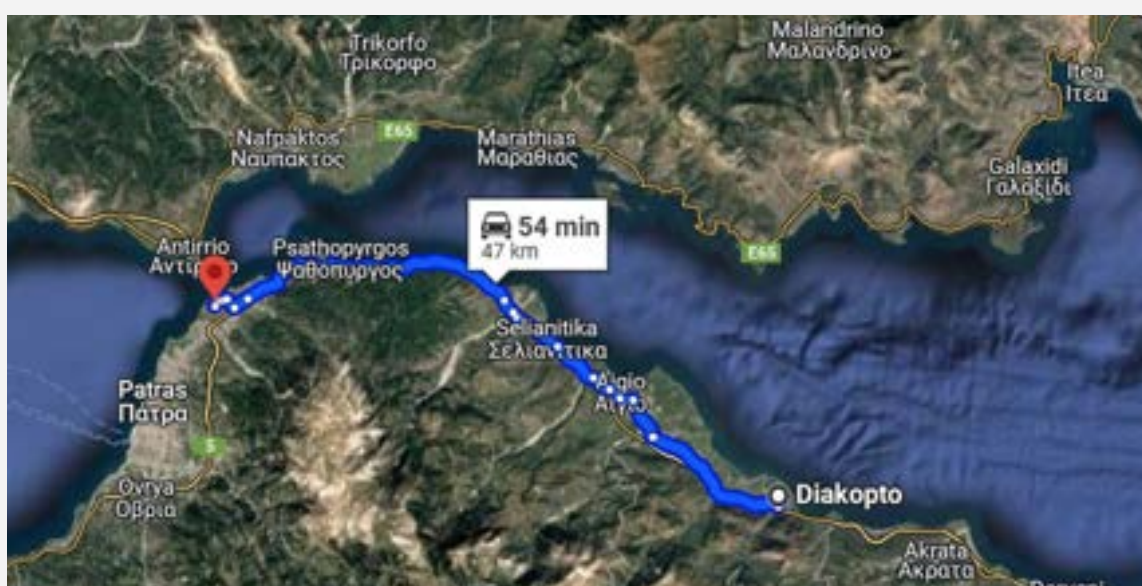
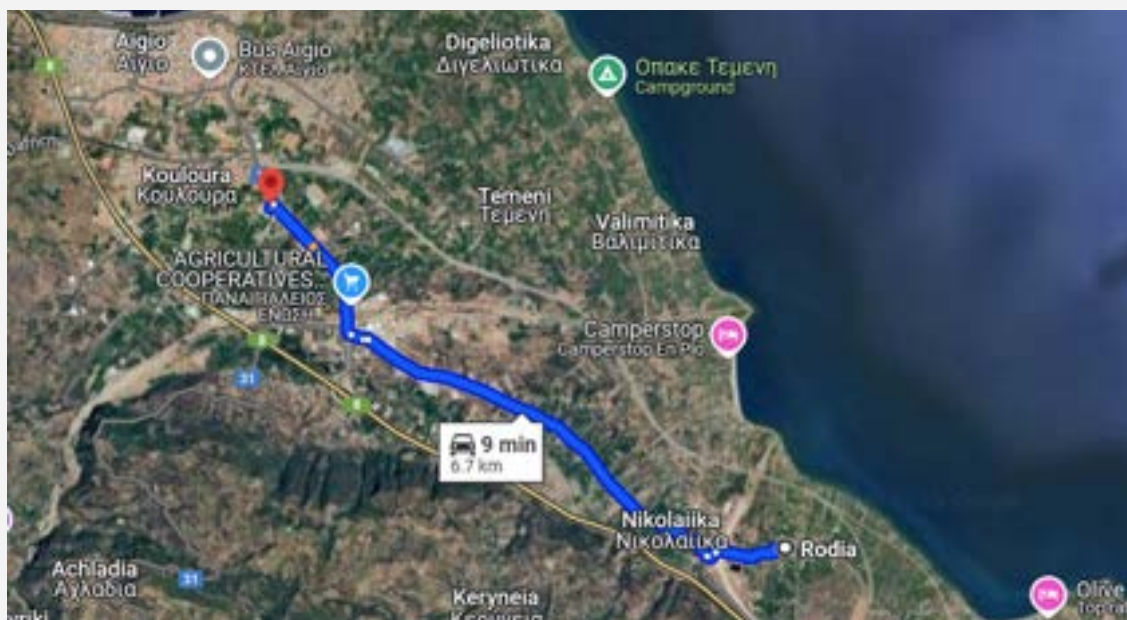
100 min. drive
from Athens

110 min. train
from Airport

9 min. drive
from Aigio Town

54 min. drive
from Patras City
(3rd largest city in Greece)

32 min. drive
Kalavrita Ski resort



CODE	FLOOR	TOTAL SURFACE	SURFACE INTERNAL	BALCONY	GARDEN	ROOF GARDEN	BEDROOM	BATH		
DIA-01	0	70	30	10	20	10	1	1		
DIA-02	0	70	30	10	20	10	1	1		
DIA-03	0	70	30	10	20	10	1	1		
DIA-04	0	70	30	10	20	10	1	1		
DIA-05	0	70	30	10	20	10	1	1		
DIA-06	0	70	30	10	20	10	1	1		
DIA-07	0	70	30	10	20	10	1	1		
DIA-08	0	70	30	10	20	10	1	1		

CODE	FLOOR	TOTAL SURFACE	SURFACE INTERNAL	BALCONY	GARDEN	ROOF GARDEN	BEDROOM	BATH		
DIA-A1	1	45	28	7		10	1	1		
DIA-A2	1	40	23	7		10	1	1		
DIA-A3	1	43	26	7		10	1	1		
DIA-A4	1	40	23	7		10	1	1		
DIA-A5	1	40	23	7		10	1	1		
DIA-A6	1	41	25	6		10	1	1		
DIA-A7	1	42	26	6		10	1	1		
DIA-A8	1	43	26	7		10	1	1		
DIA-A9	1	40	23	7		10	1	1		
DIA-A10	1	43	26	7		10	1	1		
DIA-A11	1	40	23	7		10	1	1		

1st Floor

CODE	FLOOR	TOTAL SURFACE	SURFACE INTERNAL	BALCONY	GARDEN	ROOF GARDEN	BEDROOM	BATH		
DIA-B1	1	45	28	7		-	1	1		
DIA-B2	1	40	23	7		-	1	1		
DIA-B3	1	43	26	7		-	1	1		
DIA-B4	1	40	23	7		-	1	1		
DIA-B5	1	40	23	7		-	1	1		
DIA-B6	1	41	25	6		-	1	1		
DIA-B7	1	42	26	6		-	1	1		
DIA-B8	1	43	26	7		-	1	1		
DIA-B9	1	40	23	7		-	1	1		
DIA-B10	1	43	26	7		-	1	1		
DIA-B11	1	40	23	7		-	1	1		

1st Floor

